

PRELIMINARY PLANS FOR UPGRADING NINTH STREET PUMPING STATION

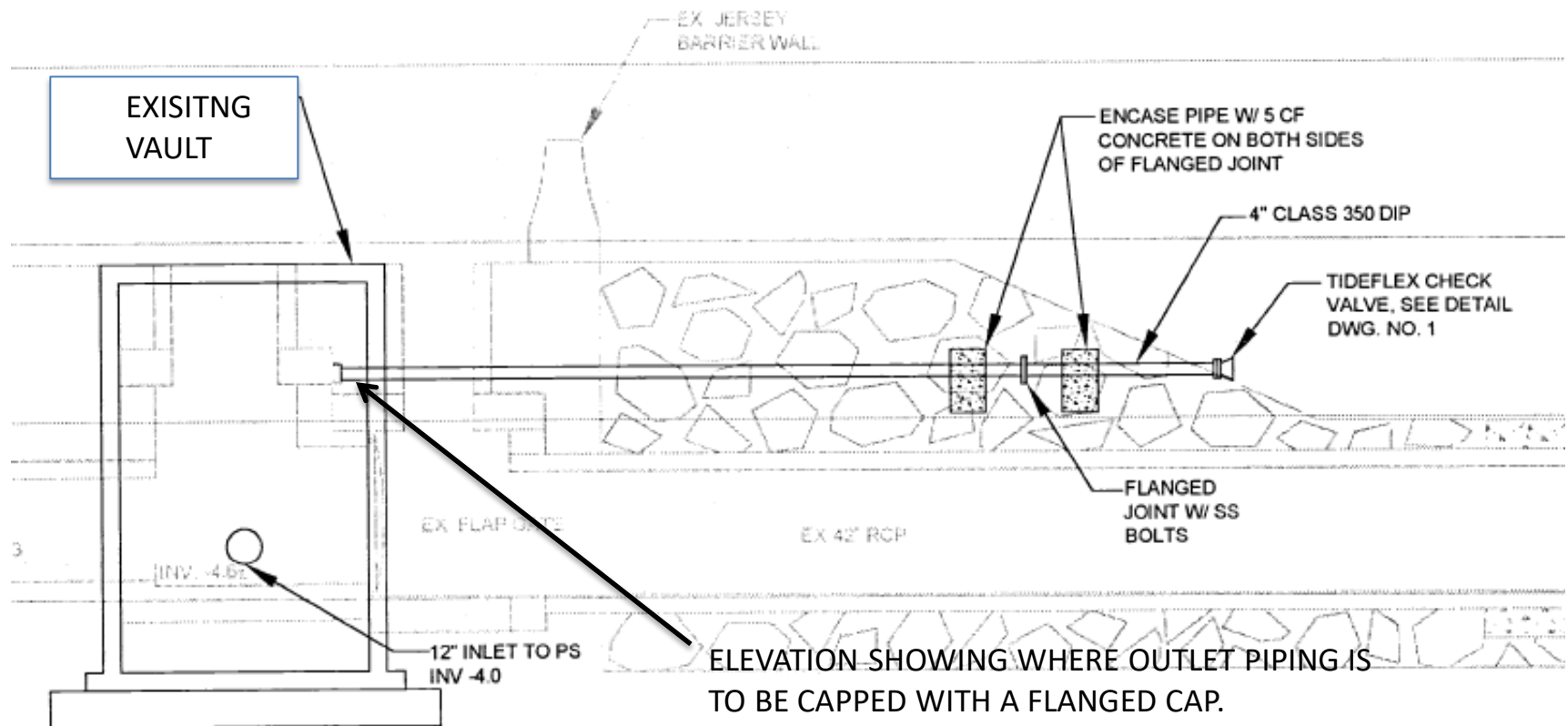
CITY OF NORTH BEACH, MARYLAND 20714

PREPARED BY

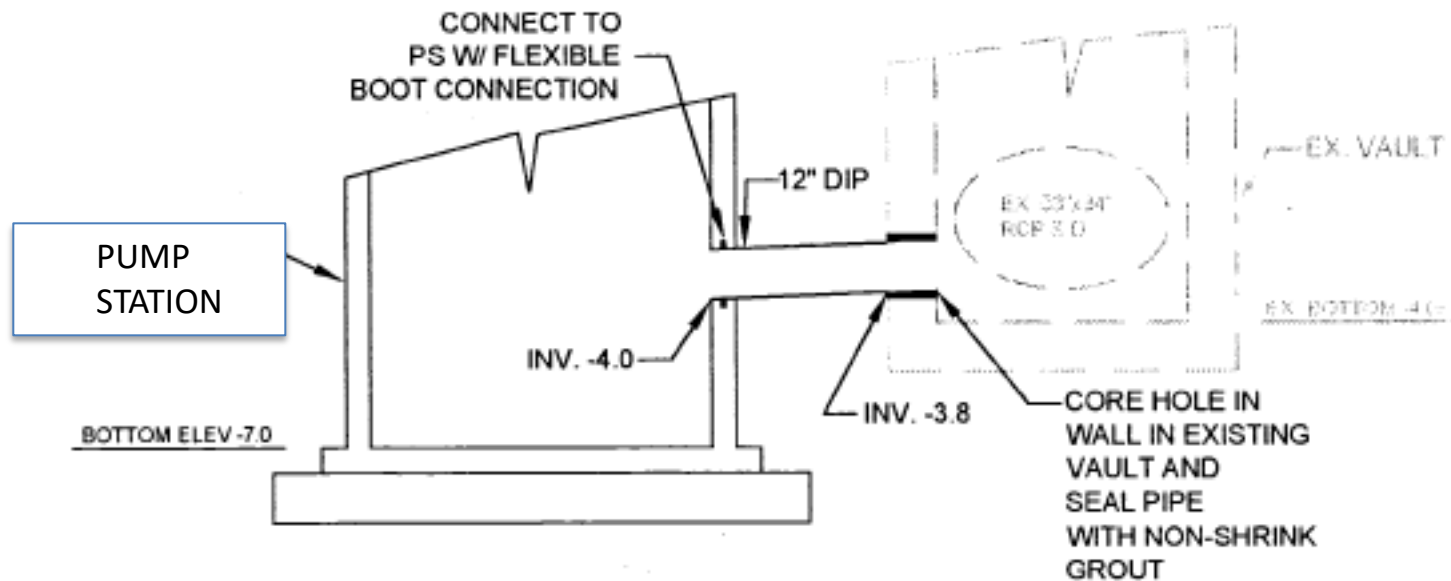
Gary H. Koopmann, Ph.D.
Licensed Professional Engineer #48553
Texas Board of Professional Engineers

garykoopmann@gmail.com

814 769 3743

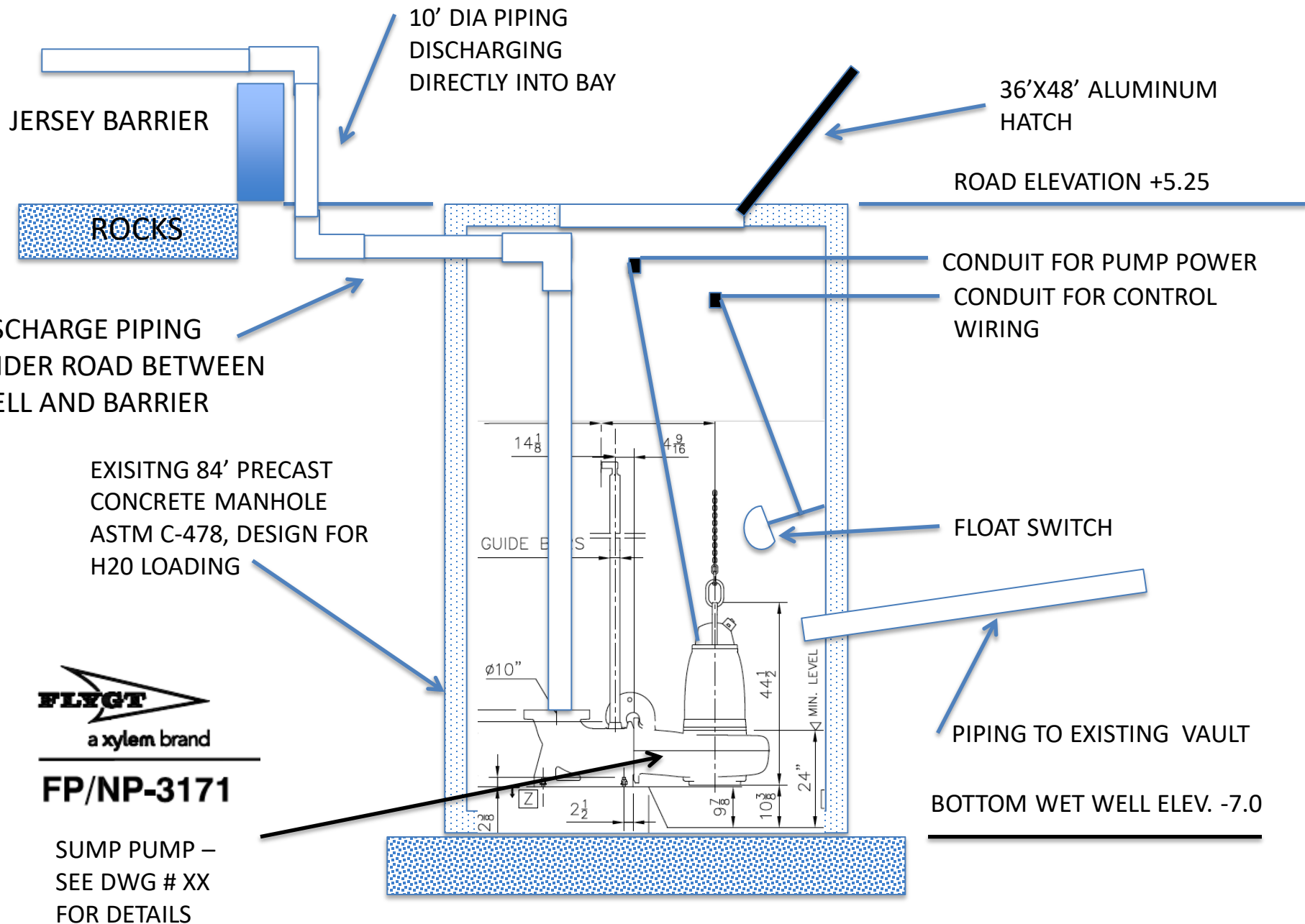


PLAN FOR 9TH STREET PUMP UPGRADE



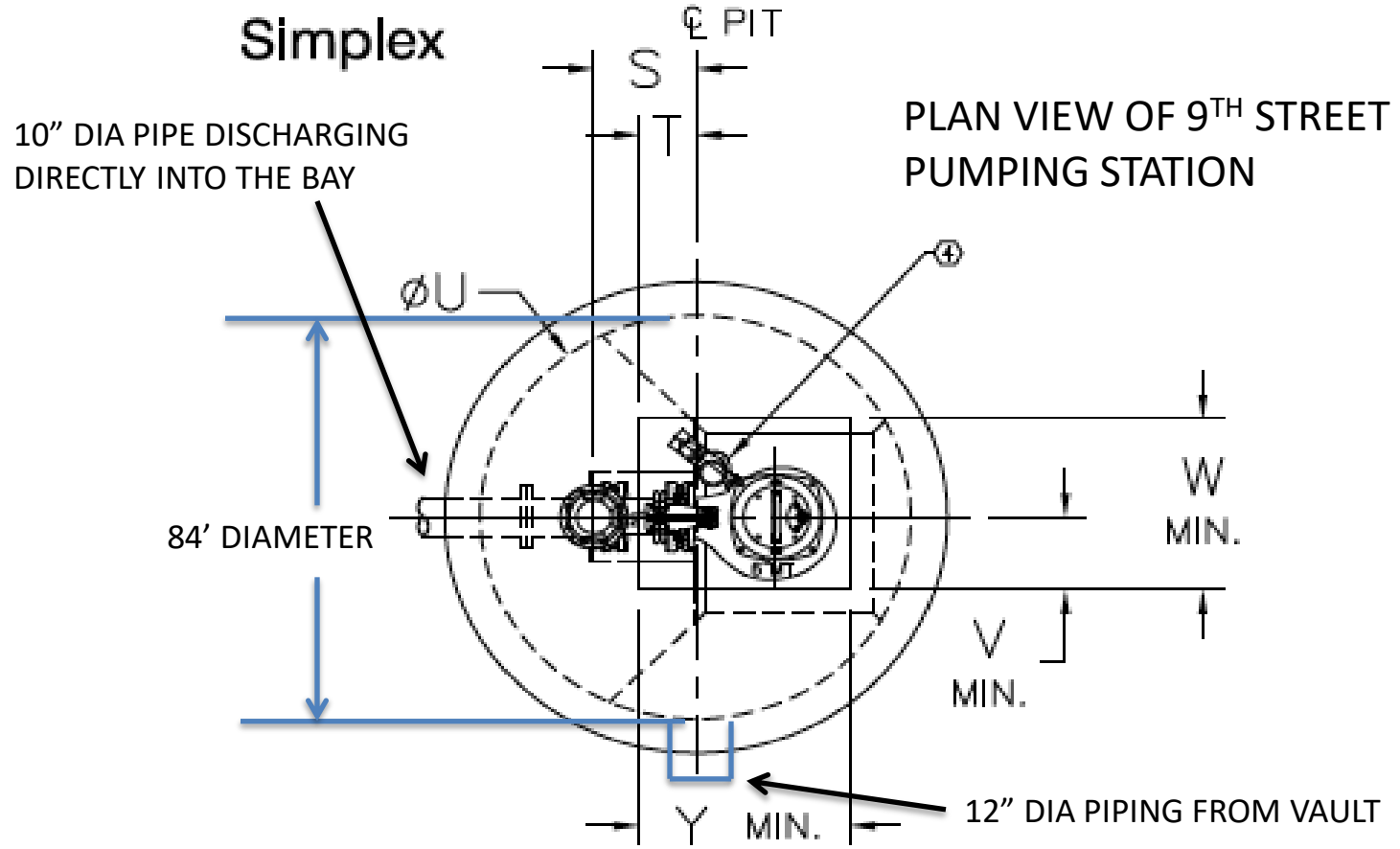
DETAIL
CONNECTION TO EXISTING
VAULT

DRAWING #4



DRAWING #5

ELEVATION FOR 9TH STREET PUMPING STATOIN



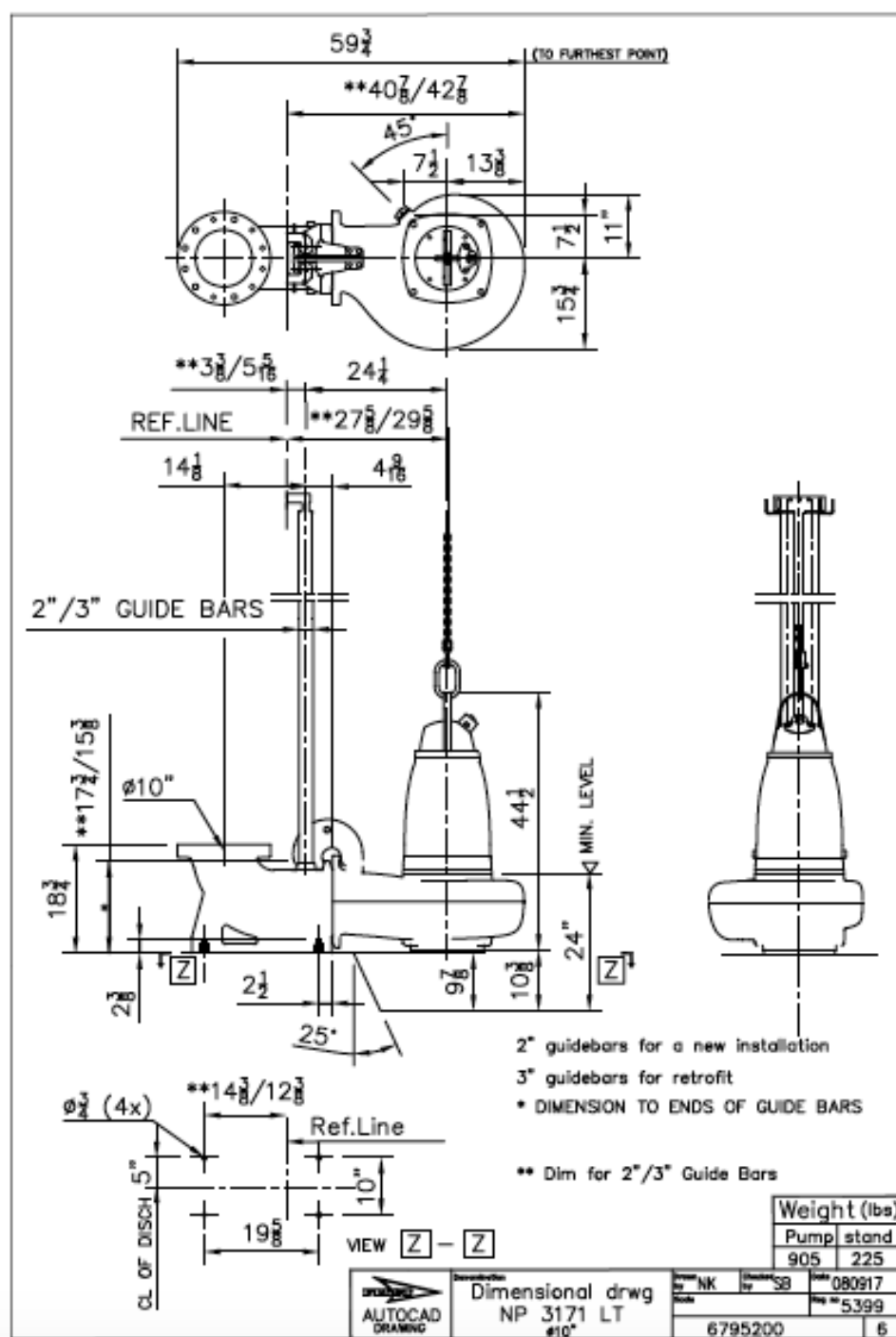
ALL DIMENSIONS ARE IN INCHES

MODEL	NOM. SIZE	VERSION	GUIDE BAR SIZE	SIMPLEX									
				A	B	C	D	S	T	U	V	W	Y
NP	4"	SH	2"	2 $\frac{3}{4}$	9 $\frac{7}{8}$	8	4	19 $\frac{3}{4}$	13 $\frac{1}{4}$	72	9 $\frac{1}{2}$	27 $\frac{1}{2}$	32
NP	4"	SH	3"	$\frac{7}{8}$	9 $\frac{7}{8}$	8	4	19 $\frac{3}{4}$	15 $\frac{1}{4}$	72	9 $\frac{1}{2}$	27 $\frac{1}{2}$	34
FP/NP	4"	HT	2"	2 $\frac{3}{4}$	9 $\frac{7}{8}$	8	4	19 $\frac{3}{4}$	13 $\frac{1}{4}$	72	12	29 $\frac{1}{2}$	33
FP/NP	4"	HT	3"	$\frac{7}{8}$	9 $\frac{7}{8}$	8	4	19 $\frac{3}{4}$	15 $\frac{1}{4}$	72	12	29 $\frac{1}{2}$	35
FP/NP	6"	MT	2"	4 $\frac{3}{8}$	11	10	5	17	9 $\frac{3}{8}$	72	13	30 $\frac{1}{2}$	35
FP/NP	6"	MT	3"	2 $\frac{3}{8}$	11	10	5	17	11 $\frac{3}{8}$	72	13	30 $\frac{1}{2}$	37
NP	10"	LT	2"	16 $\frac{1}{8}$	19 $\frac{3}{4}$	10	5	23 $\frac{3}{4}$	13	96	17 $\frac{1}{2}$	37	43
NP	10"	LT	3"	14 $\frac{1}{8}$	19 $\frac{3}{4}$	10	5	23 $\frac{3}{4}$	14 $\frac{7}{8}$	96	17 $\frac{1}{2}$	37	45

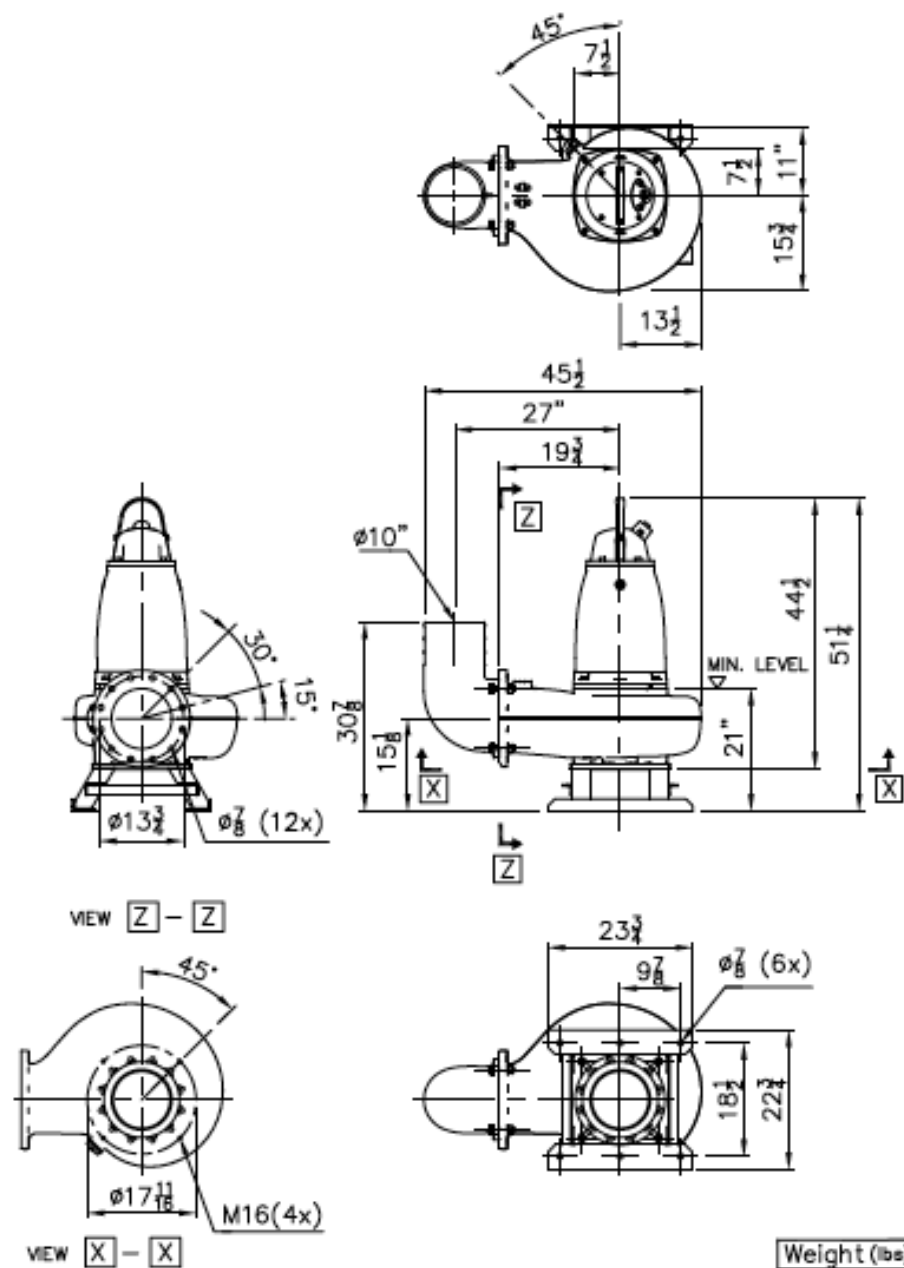
DRAWING #6

PUMP DIIMENSIONS


DRAWING #7



PUMP DIMESIONS



DRAWING #8

 AUTOCAD DRAWING	Description Dimensional drwg NS 3171 LT #10"	Spec	KA	Standard	SB	Order	060110
		Rev				Proj no	
		6795400					

