

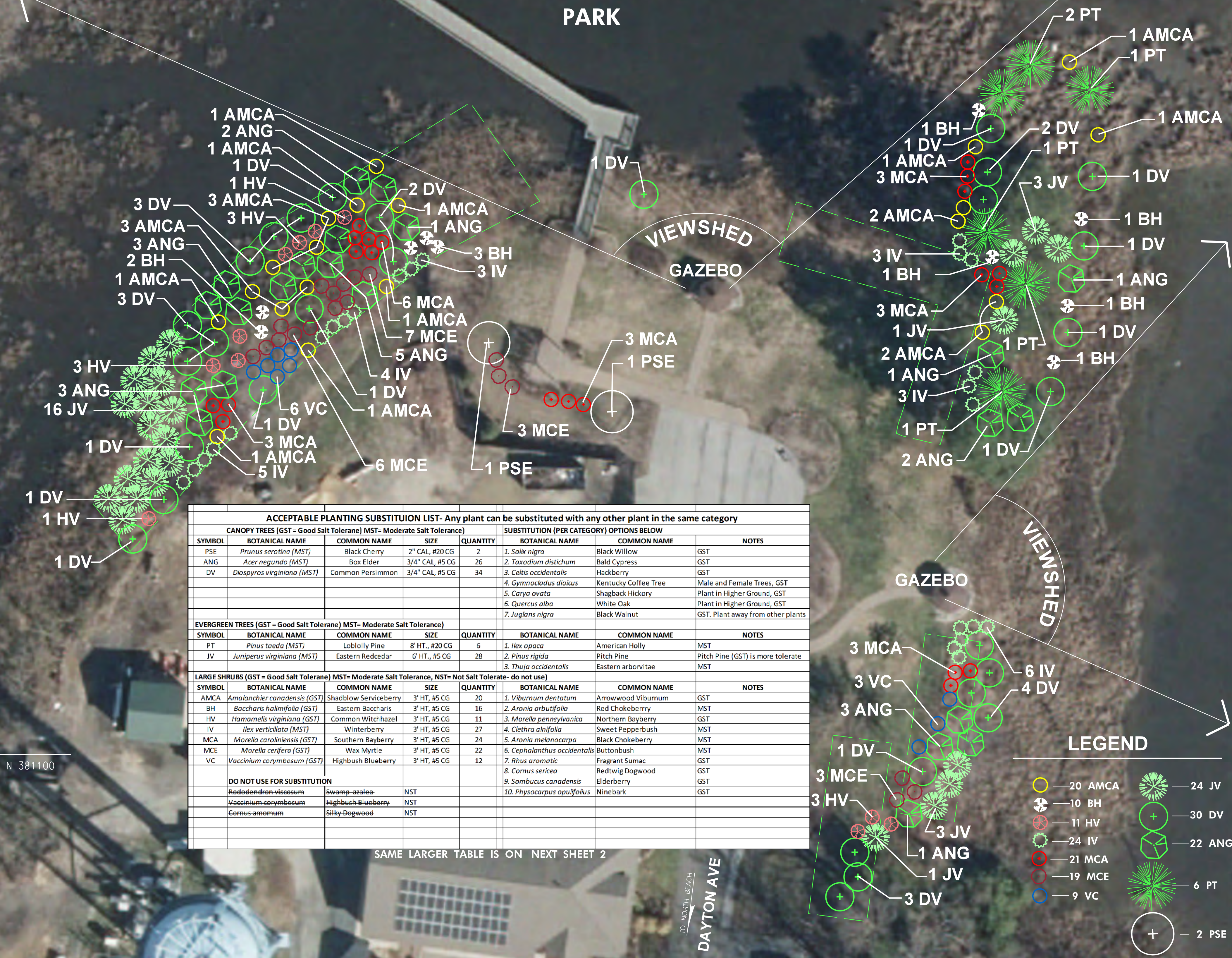


Att  
Attachment "A"

# WETLANDS OVERLOOK PARK

N 381400  
E 1445300

N 381400  
E 1445650



PLANTING SCHEDULE				
<b>CANOPY TREES</b>				
SYMBOL	BOTANICAL NAME	COMMON NAME	SIZE	QUANTITY
PSE	<i>Prunus serotina</i>	black cherry	2" CAL, #20 CG	2
PT	<i>Pinus taeda</i>	loblolly pine	8' HT., #20 CG	6
<b>UNDERSTORY TREES</b>				
SYMBOL	BOTANICAL NAME	COMMON NAME	SIZE	QUANTITY
ANG	<i>Acer negundo</i>	box elder	3/4" CAL, #5 CG	22
DV	<i>Diospyros virginiana</i>	common persimmon	3/4" CAL, #5 CG	30
JV	<i>Juniperus virginiana</i>	eastern redcedar	6' HT., #5 CG	24
<b>LARGE SHRUBS</b>				
SYMBOL	BOTANICAL NAME	COMMON NAME	SIZE	QUANTITY
AMCA	<i>Amalanchier canadensis</i>	shadblow serviceberry	3' HT, #5 CG	20
BH	<i>Baccharis halimifolia</i>	eastern baccharis	3' HT, #5 CG	10
HV	<i>Hamamelis virginiana</i>	common witchhazel	3' HT, #5 CG	11
IV	<i>Ilex verticillata</i>	winterberry	3' HT, #5 CG	24
MCA	<i>Morella carolinensis</i>	southern bayberry	3' HT, #5 CG	21
MCE	<i>Morella cerifera</i>	wax myrtle	3' HT, #5 CG	19
VC	<i>Vaccinium corymbosum</i>	highbush blueberry	3' HT, #5 CG	9

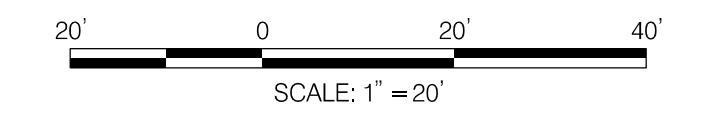
PREVIOUS DEPICTED PLANTING LOCATIONS

ACCEPTABLE PLANTING SUBSTITUTION LIST- Any plant can be substituted with any other plant in the same category							
CANOPY TREES (GST = Good Salt Tolerane) MST= Moderate Salt Tolerance				SUBSTITUTION (PER CATEGORY) OPTIONS BELOW			
SYMBOL	BOTANICAL NAME	COMMON NAME	SIZE	QUANTITY	BOTANICAL NAME	COMMON NAME	NOTES
PSE	<i>Prunus serotina (MST)</i>	Black Cherry	2" CAL, #20 CG	2	1. <i>Salix nigra</i>	Black Willow	GST
ANG	<i>Acer negundo (MST)</i>	Box Elder	3/4" CAL, #5 CG	26	2. <i>Taxodium distichum</i>	Bald Cypress	GST
DV	<i>Diospyros virginiana (MST)</i>	Common Persimmon	3/4" CAL, #5 CG	34	3. <i>Celtis occidentalis</i>	Hackberry	GST
					4. <i>Gymnocladus dioica</i>	Kentucky Coffee Tree	Male and Female Trees, GST
					5. <i>Carya ovata</i>	Shagbark Hickory	Plant in Higher Ground, GST
					6. <i>Quercus alba</i>	White Oak	Plant in Higher Ground, GST
					7. <i>Juglans nigra</i>	Black Walnut	GST. Plant away from other plants
<b>EVERGREEN TREES (GST = Good Salt Tolerane) MST= Moderate Salt Tolerance</b>							
SYMBOL	BOTANICAL NAME	COMMON NAME	SIZE	QUANTITY	BOTANICAL NAME	COMMON NAME	NOTES
PT	<i>Pinus taeda (MST)</i>	Loblolly Pine	8' HT., #20 CG	6	1. <i>Ilex opaca</i>	American Holly	MST
JV	<i>Juniperus virginiana (MST)</i>	Eastern Redcedar	6' HT., #5 CG	28	2. <i>Pinus rigida</i>	Pitch Pine	Pitch Pine (GST) is more tolerate
					3. <i>Thuja occidentalis</i>	Eastern arborvitae	MST
<b>LARGE SHRUBS (GST = Good Salt Tolerane) MST= Moderate Salt Tolerance, NST= Not Salt Tolerate- do not use</b>							
SYMBOL	BOTANICAL NAME	COMMON NAME	SIZE	QUANTITY	BOTANICAL NAME	COMMON NAME	NOTES
AMCA	<i>Amalanchier canadensis (GST)</i>	Shadblow Serviceberry	3' HT, #5 CG	20	1. <i>Viburnum dentatum</i>	Arrowwood Viburnum	GST
BH	<i>Baccharis halimifolia (GST)</i>	Eastern Baccharis	3' HT, #5 CG	16	2. <i>Aronia arbutifolia</i>	Red Chokeberry	MST
HV	<i>Hamamelis virginiana (GST)</i>	Common Witchhazel	3' HT, #5 CG	11	3. <i>Aronia pennsylvanica</i>	Northern Bayberry	GST
IV	<i>Ilex verticillata (MST)</i>	Winterberry	3' HT, #5 CG	27	4. <i>Clethra alnifolia</i>	Sweet Pepperbush	MST
MCA	<i>Morella carolinensis (GST)</i>	Southern Bayberry	3' HT, #5 CG	24	5. <i>Aronia melanocarpa</i>	Black Chokeberry	MST
MCE	<i>Morella cerifera (GST)</i>	Wax Myrtle	3' HT, #5 CG	22	6. <i>Cephalanthus occidentalis</i>	Buttonbush	MST
VC	<i>Vaccinium corymbosum (GST)</i>	Highbush Blueberry	3' HT, #5 CG	12	7. <i>Rhus aromatica</i>	Fragrant Sumac	GST
					8. <i>Cornus sericea</i>	Redtwig Dogwood	GST
					9. <i>Sambucus canadensis</i>	Elderberry	GST
					10. <i>Physocarpus opulifolius</i>	Ninebark	GST
<b>DO NOT USE FOR SUBSTITUTION</b>							
	<i>Rhododendron-viscosum</i>	Swamp-azalea	NST				
	<i>Vaccinium-corymbosum</i>	Highbush Blueberry	NST				
	<i>Cornus-amomum</i>	Silky-Dogwood	NST				

SAME LARGER TABLE IS ON NEXT SHEET 2

**LEGEND**

- 20 AMCA
- 10 BH
- 11 HV
- 24 IV
- 21 MCA
- 19 MCE
- 9 VC
- 24 JV
- 30 DV
- 22 ANG
- 6 PT
- 2 PSE



**MDOT**  
MARYLAND DEPARTMENT OF TRANSPORTATION  
STATE HIGHWAY ADMINISTRATION

LANDSCAPE PROGRAMS DIVISION  
MD 261 (BAY AVENUE)  
TWO LANE RECONSTRUCTION  
FROM 9TH STREET TO  
THE ANNE ARUNDEL COUNTY LINE  
Critical Area Planting #1

SCALE 1" = 20' ADVERTISED DATE \_\_\_\_\_ CONTRACT NO. CA1485184

DESIGNED BY TPC COUNTY CALVERT  
DRAWN BY TPC LOGMILE \_\_\_\_\_  
CHECKED BY JRP HORIZONTAL SCALE \_\_\_\_\_  
MDE/PRD 17-PR-0059 VERTICAL SCALE \_\_\_\_\_

DRAWING NO. LD-01 OF LD-02 SHEET NO. 01 OF 02

NOTE: PLANTING LOCATIONS ARE SHOWN FOR THE TOWN OF NORTH BEACH'S CONSIDERATION. PLANTING LOCATIONS MAY BE PLACED AT THE DESCRETION OF THE TOWN OF NORTH BEACH

BY: toonley - Landscape Programs Division