

## NP 3153 LT 3~ 624

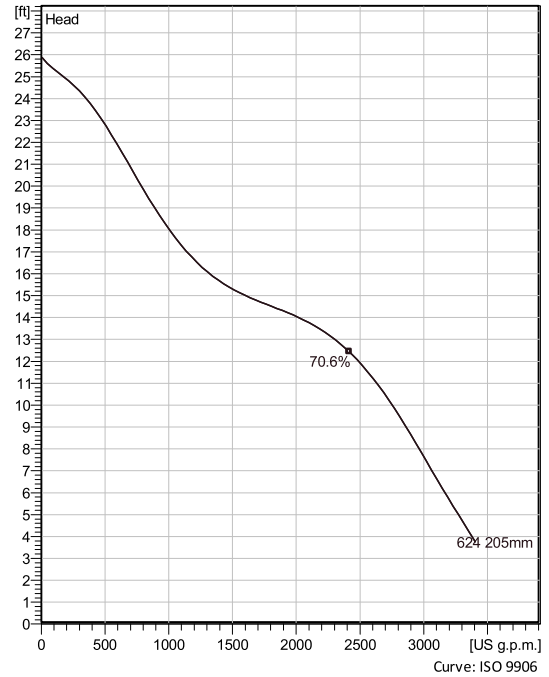
Patented self cleaning semi-open channel impeller, ideal for pumping in waste water applications. Possible to be upgraded with Guide-pin® for even better clogging resistance. Modular based design with high adaptation grade.



### Technical specification



Curves according to: Water, pure ,39.2 °F,62.42 lb/ft³,1.6891E-5 ft²/s



### Configuration

<b>Motor number</b> N3153.095 21-18-6AA-W 15hp	<b>Installation type</b> P - Semi permanent, Wet
<b>Impeller diameter</b> 205 mm	<b>Discharge diameter</b> 10 inch

### Pump information

<b>Impeller diameter</b> 205 mm
<b>Discharge diameter</b> 10 inch
<b>Inlet diameter</b> 250 mm
<b>Maximum operating speed</b> 1155 rpm
<b>Number of blades</b> 3
<b>Max. fluid temperature</b> 40 °C

### Materials

<b>Impeller</b> Hard-Iron™
-------------------------------

Project  
Block

Created by  
Created on 5/4/2021 Last update 5/4/2021

# NP 3153 LT 3~ 624

## Technical specification



### Motor - General

<b>Motor number</b> N3153.095 21-18-6AA-W 15hp	<b>Phases</b> 3~	<b>Rated speed</b> 1155 rpm	<b>Rated power</b> 15 hp
<b>ATEX approved</b> FM	<b>Number of poles</b> 6	<b>Rated current</b> 49 A	<b>Stator variant</b> 4
<b>Frequency</b> 60 Hz	<b>Rated voltage</b> 208 V	<b>Insulation class</b> H	<b>Type of Duty</b> S1
<b>Version code</b> 095			

### Motor - Technical

<b>Power factor - 1/1 Load</b> 0.73	<b>Motor efficiency - 1/1 Load</b> 87.0 %	<b>Total moment of inertia</b> 3.13 lb ft <sup>2</sup>	<b>Starts per hour max.</b> 30
<b>Power factor - 3/4 Load</b> 0.66	<b>Motor efficiency - 3/4 Load</b> 88.0 %	<b>Starting current, direct starting</b> 225 A	
<b>Power factor - 1/2 Load</b> 0.54	<b>Motor efficiency - 1/2 Load</b> 87.5 %	<b>Starting current, star-delta</b> 75 A	

Project  
Block

Created by  
Created on 5/4/2021 Last update 5/4/2021

# NP 3153 LT 3~ 624

## Performance curve

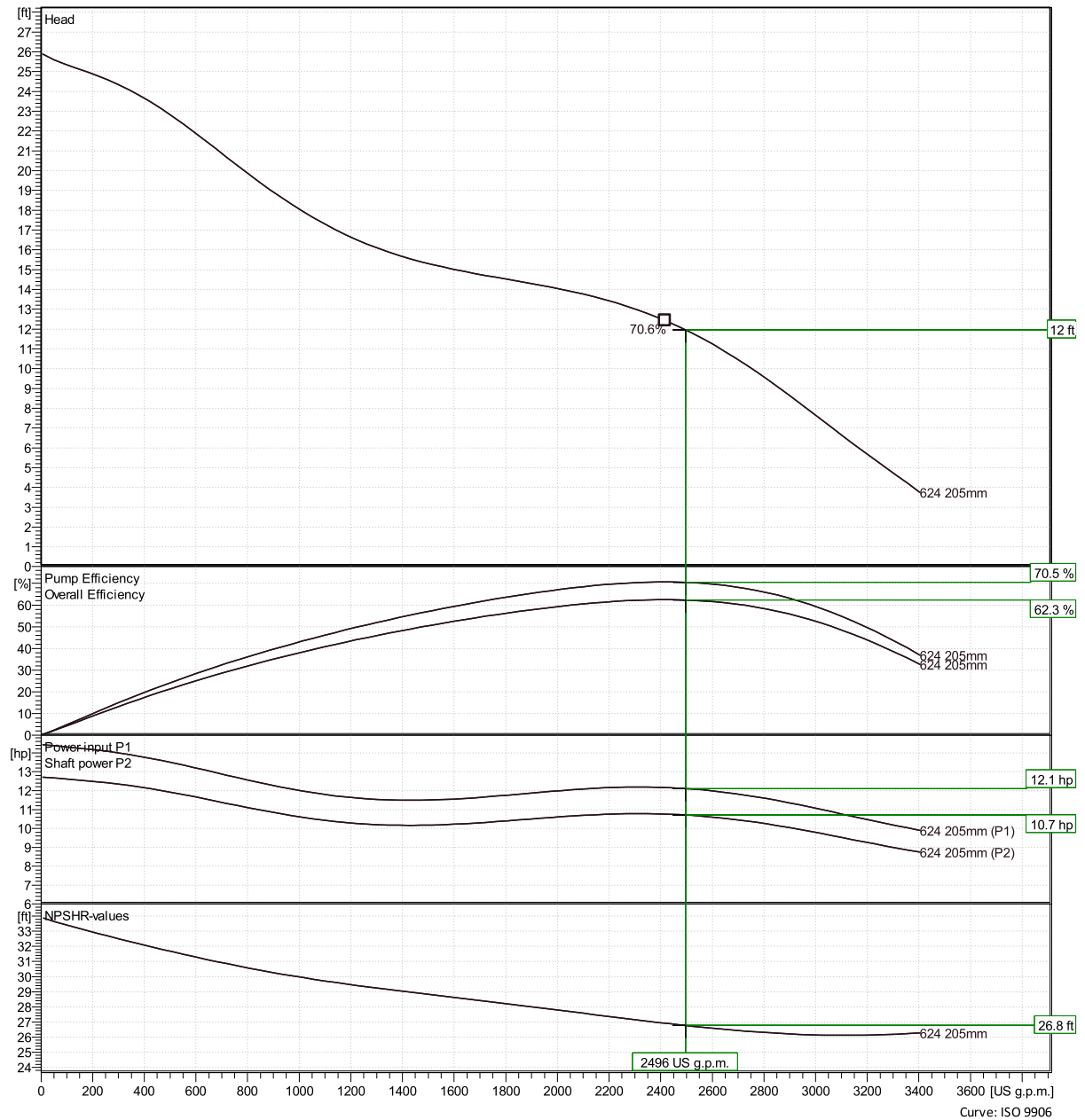


### Duty point

**Flow**  
2500 US g.p.m.

**Head**  
12 ft

Curves according to: Water, pure 39.2 °F, 62.42 lb/ft<sup>3</sup>, 1.6891E-5 ft<sup>2</sup>/s



**Project**  
**Block**

**Created by**  
**Created on** 5/4/2021 **Last update** 5/4/2021

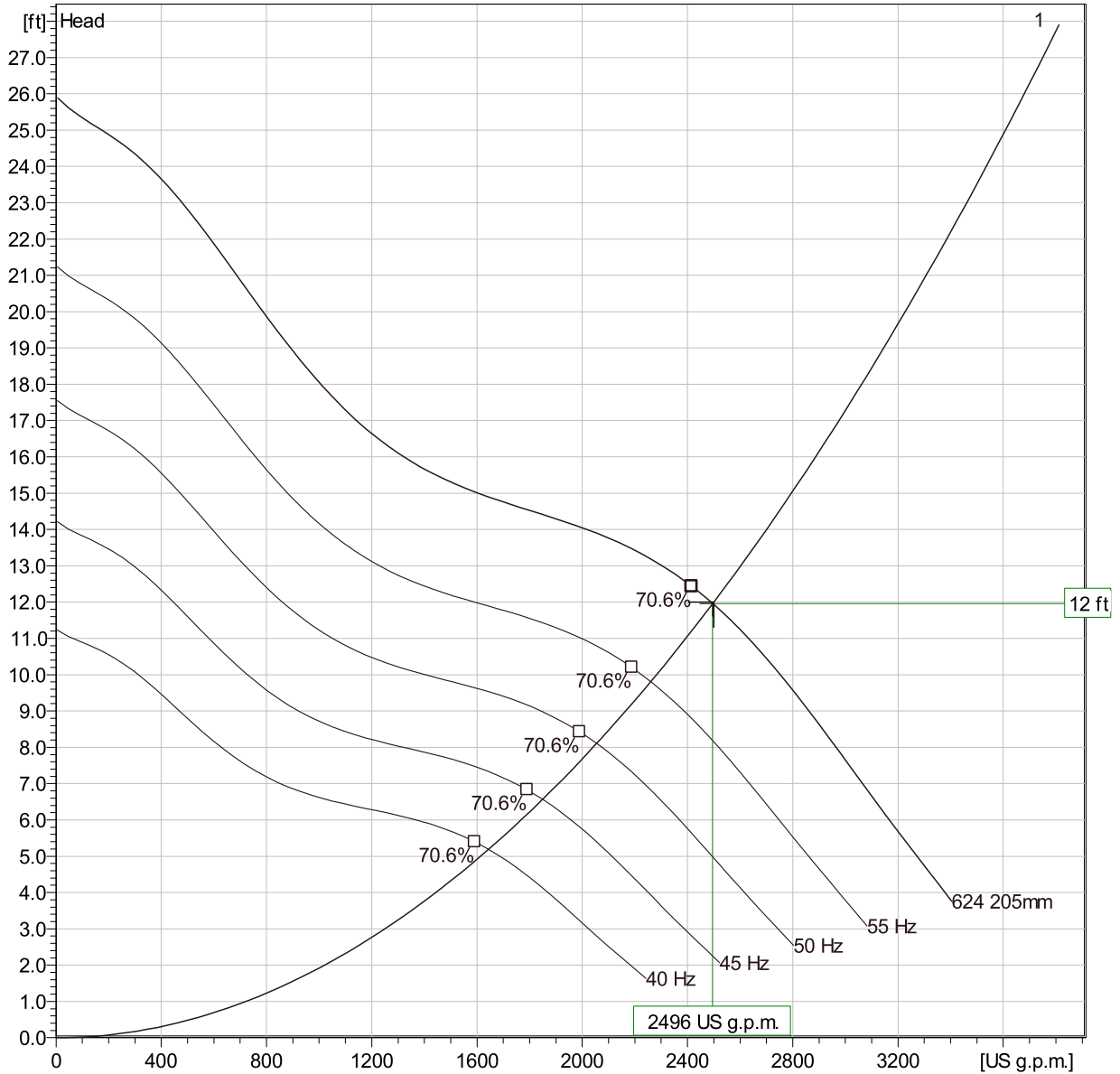
Curve: ISO 9906

# NP 3153 LT 3~ 624

## Duty Analysis



Curves according to: Water, pure, 39.2 °F, 62.42 lb/ft<sup>3</sup>, 1.6891E-5 ft<sup>2</sup>/s



### Operating characteristics

Pumps / Systems	Flow	Head	Shaft power	Flow	Head	Shaft power	Hydr.eff.	Specific Energy	NPSHre
1	2500 US g.p.m	12 ft	10.7 hp	2500 US g.p.m	12 ft	10.7 hp	70.5 %	60.3 kWh/US l	26.8 ft

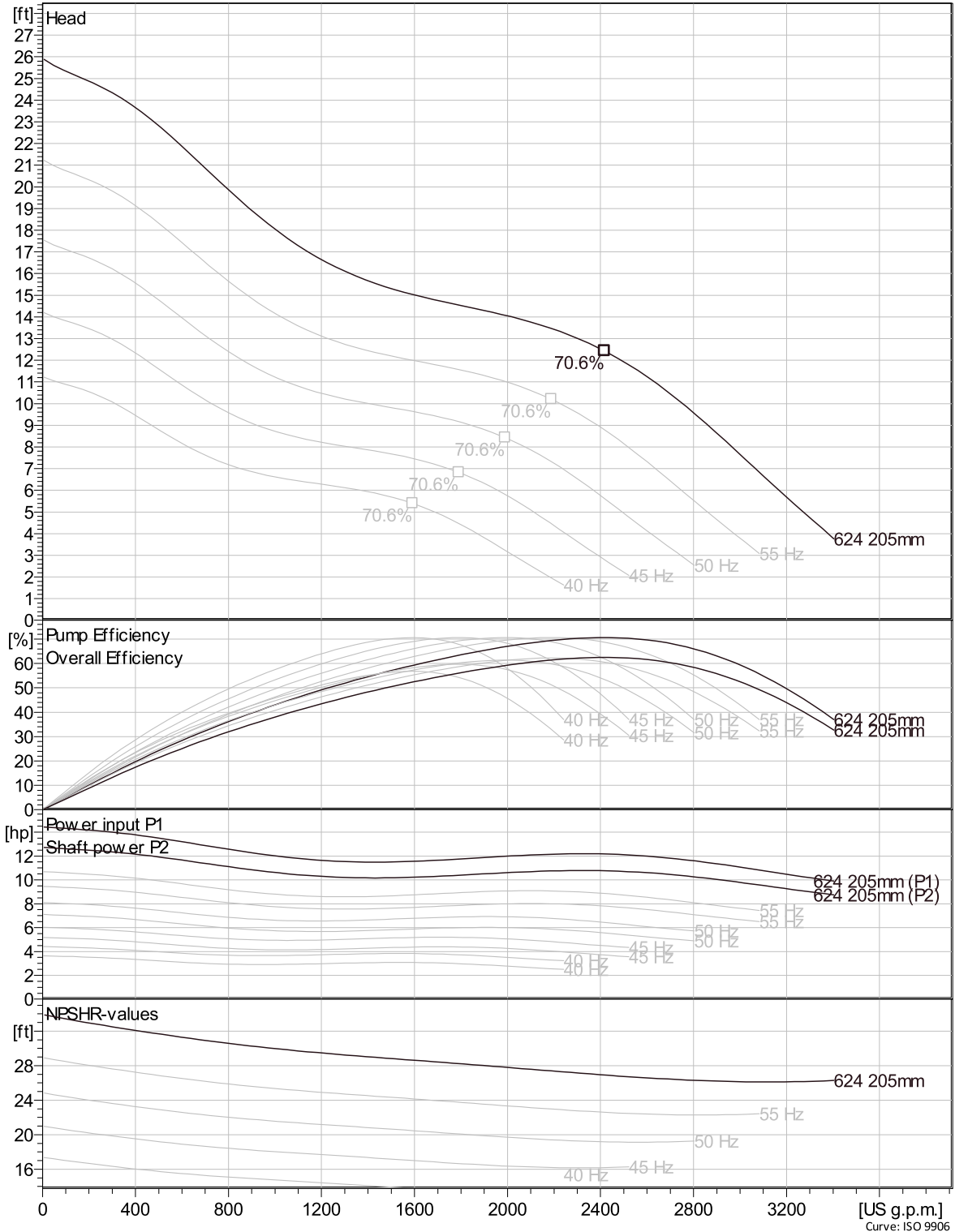
Project	Created by				
Block	Created on	5/4/2021	Last update	5/4/2021	

# NP 3153 LT 3~ 624

## VFD Curve



Curves according to: Water, pure, 39.2 °F, 62.42 lb/ft³, 1.6891E-5 ft²/s

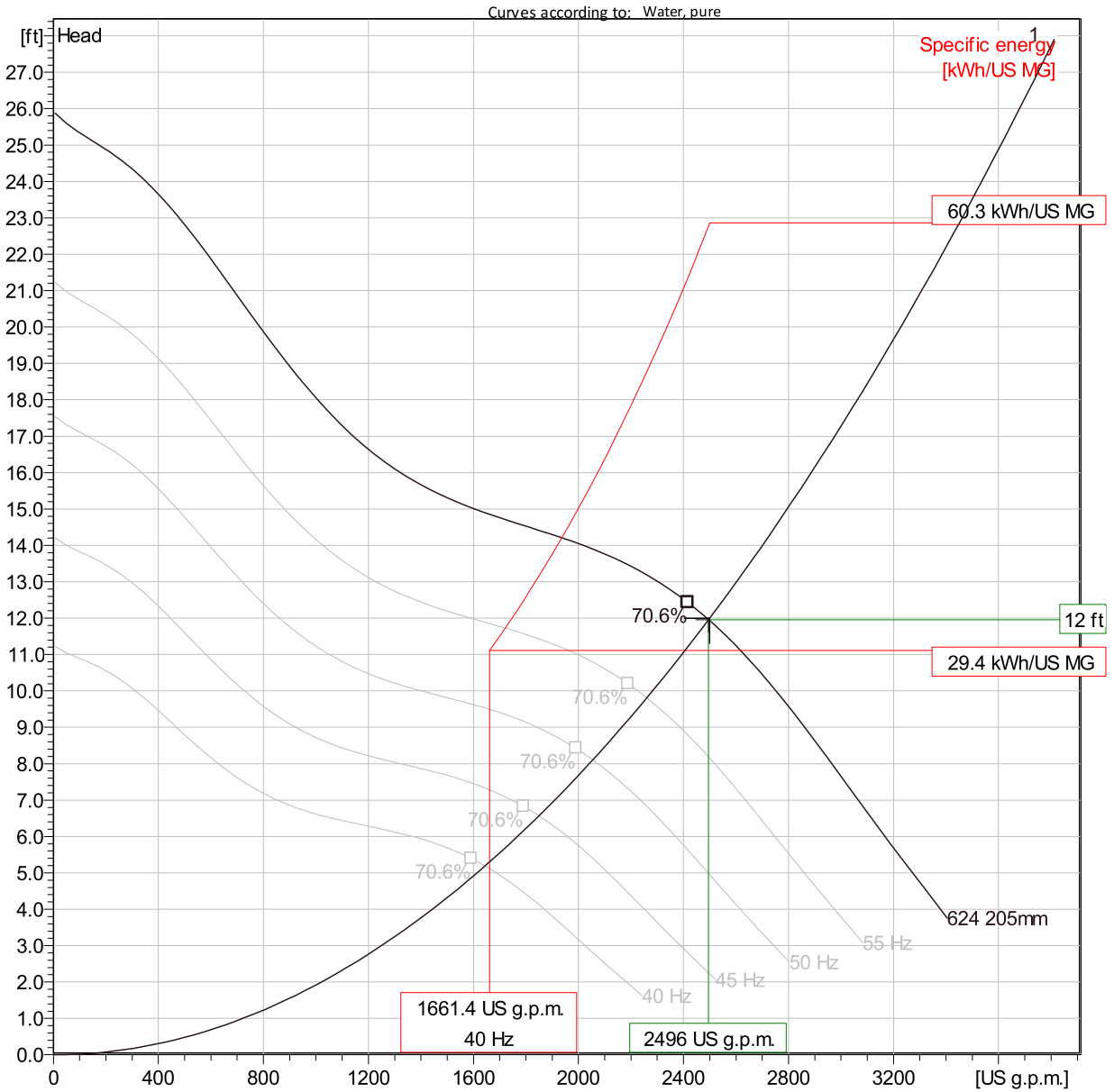


Project	Created by		
Block	Created on	5/4/2021	Last update 5/4/2021

Curve: ISO 9906

# NP 3153 LT 3~ 624

## VFD Analysis



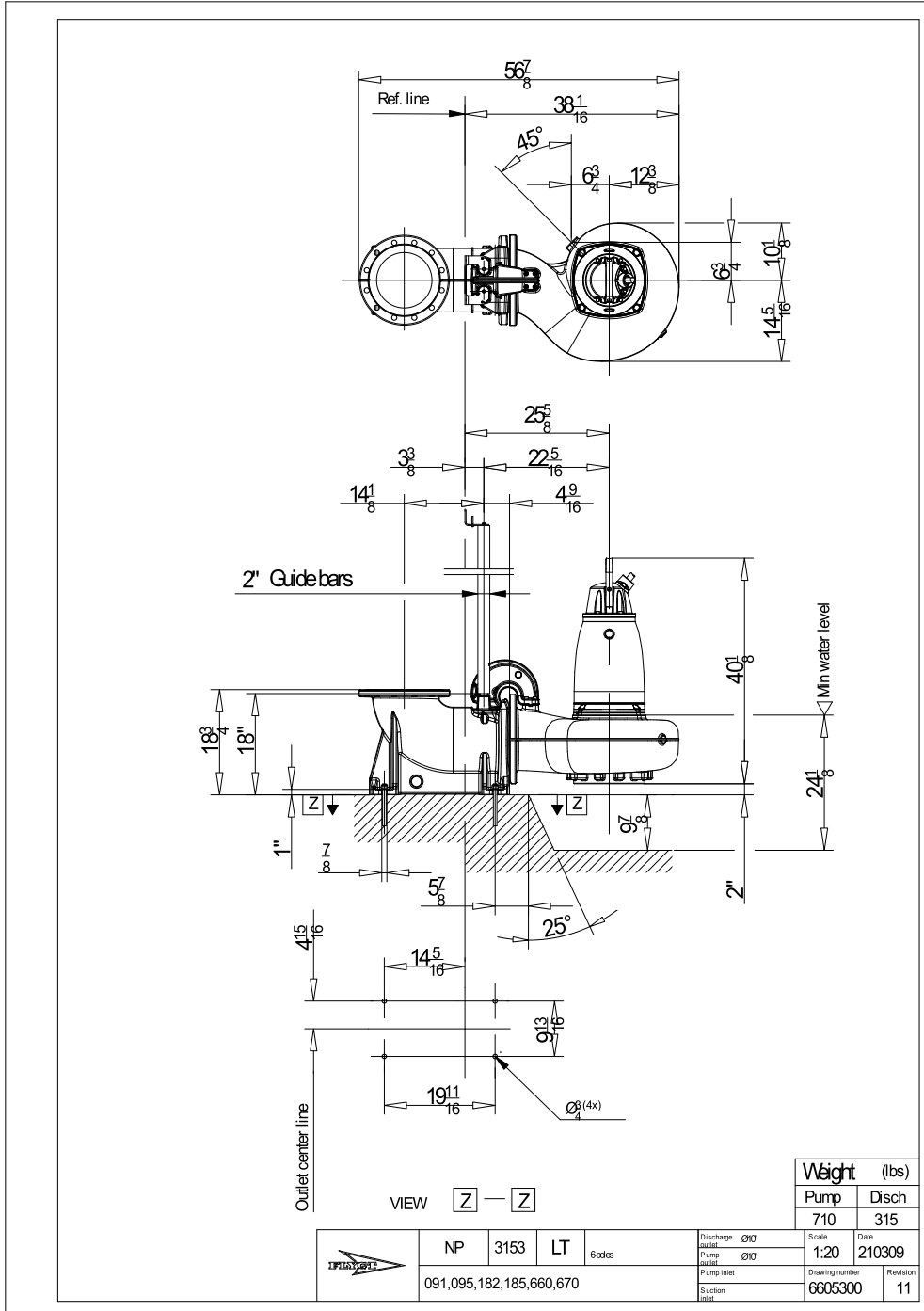
### Operating characteristics

Pumps / Systems	Frequency	Flow	Head	Shaft power	Flow	Head	Shaft power	Hydr.eff.	Specific Energy	NPSHre
1	60 Hz	2500 US g.p.m.	12 ft	10.7 hp	2500 US g.p.m.	12 ft	10.7 hp	70.5 %	60.3 kWh/US M	26.8 ft
1	55 Hz	2280 US g.p.m.	10 ft	8.22 hp	2280 US g.p.m.	10 ft	8.22 hp	70.5 %	50.7 kWh/US M	23.2 ft
1	50 Hz	2080 US g.p.m.	8.28 ft	6.17 hp	2080 US g.p.m.	8.28 ft	6.17 hp	70.5 %	42.5 kWh/US M	19.9 ft
1	45 Hz	1870 US g.p.m.	6.71 ft	4.5 hp	1870 US g.p.m.	6.71 ft	4.5 hp	70.5 %	35.5 kWh/US M	16.9 ft
1	40 Hz	1660 US g.p.m.	5.3 ft	3.16 hp	1660 US g.p.m.	5.3 ft	3.16 hp	70.5 %	29.4 kWh/US M	14 ft

Project	Created by	
Block	Created on	5/4/2021
	Last update	5/4/2021

# NP 3153 LT 3~ 624

Dimensional drawing



Project  
Block

Created by  
Created on 5/4/2021 Last update 5/4/2021