

Attachment "A"



PLANTING SCHEDULE

CANOPY TREES				
SYMBOL	BOTANICAL NAME	COMMON NAME	SIZE	QUANTITY
PSE	<i>Prunus serotina</i>	black cherry	2" CAL, #20 CG	2
PT	<i>Pinus taeda</i>	loblolly pine	8' HT., #20 CG	6
UNDERSTORY TREES				
SYMBOL	BOTANICAL NAME	COMMON NAME	SIZE	QUANTITY
ANG	<i>Acer negundo</i>	box elder	3/4" CAL, #5 CG	22
DV	<i>Diospyros virginiana</i>	common persimmon	3/4" CAL, #5 CG	30
JV	<i>Juniperus virginiana</i>	eastern redcedar	6' HT., #5 CG	24
LARGE SHRUBS				
SYMBOL	BOTANICAL NAME	COMMON NAME	SIZE	QUANTITY
AMCA	<i>Amelanchier canadensis</i>	shadbowl serviceberry	3' HT, #5 CG	20
BH	<i>Baccharis halimifolia</i>	eastern baccharis	3' HT, #5 CG	10
HV	<i>Hamelis virginiana</i>	common witchhazel	3' HT, #5 CG	11
IV	<i>Ilex verticillata</i>	winterberry	3' HT, #5 CG	24
MCA	<i>Morella carolinensis</i>	southern bayberry	3' HT, #5 CG	21
MCE	<i>Morella cerifera</i>	wax myrtle	3' HT, #5 CG	19
VC	<i>Vaccinium corymbosum</i>	highbush blueberry	3' HT, #5 CG	9

PREVIOUS DEPICTED PLANTING LOCATIONS

SCALE: 1" = 20'

LANDSCAPE PROGRAMS DIVISION
MDOT
 MARYLAND DEPARTMENT OF TRANSPORTATION
 STATE HIGHWAY ADMINISTRATION

MD 261 (BAY AVENUE)
 TWO LANE RECONSTRUCTION FROM 9TH STREET TO THE ANNE ARUNDEL COUNTY LINE
 Critical Area Planting #1

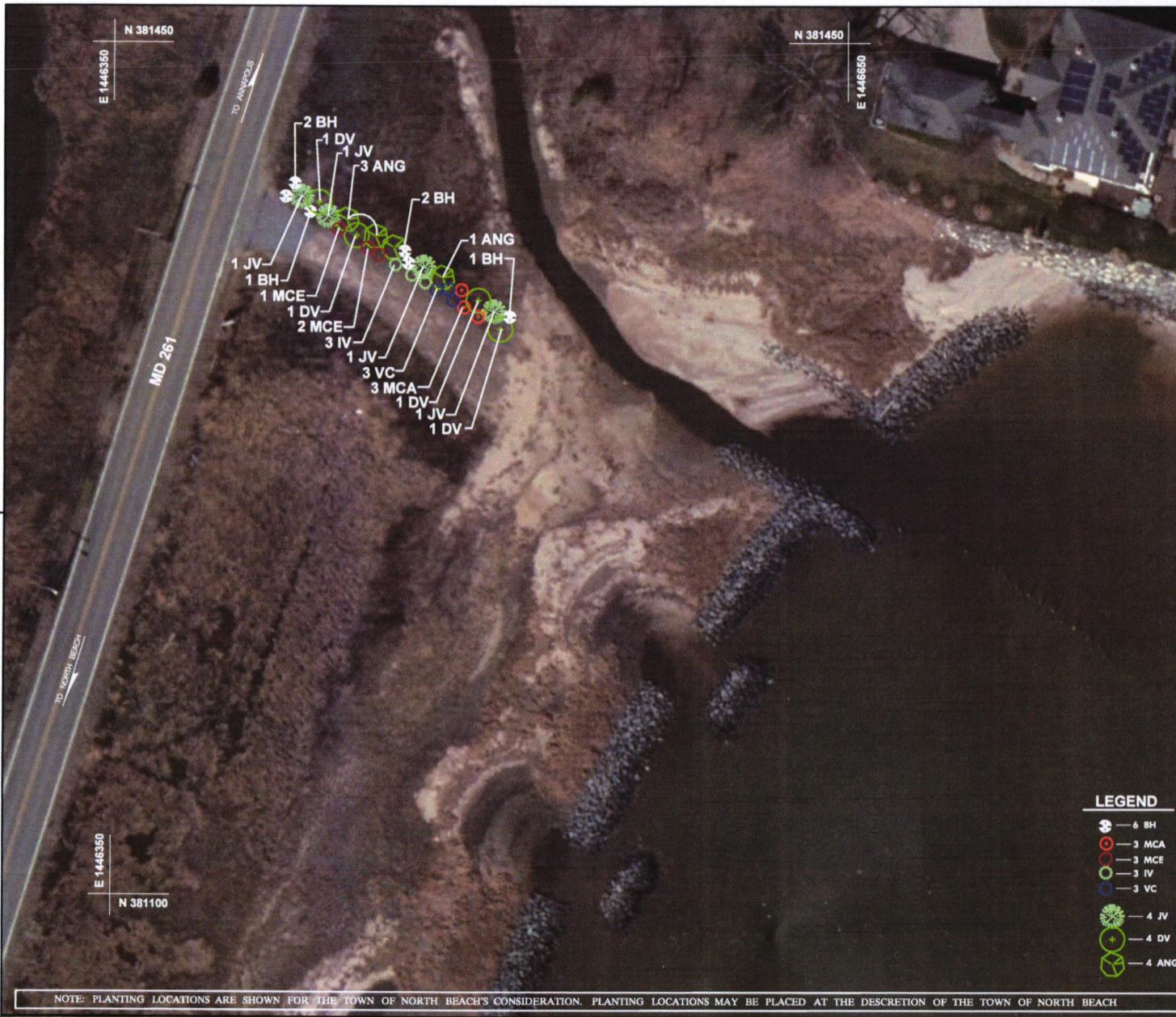
SCALE: 1" = 20' ADVERTISED DATE: _____ CONTRACT NO: CA180384

DESIGNED BY: TPC COUNTY: CALVERT
 DRAWN BY: TPC LOCALS:
 CHECKED BY: JRP HORIZONTAL SCALE:
 MDL/PRD: JT-PS-0098 VERTICAL SCALE:

DRAWING NO: LD-01 OF LD-02 SHEET NO: 01 OF 02

NOTE: PLANTING LOCATIONS ARE SHOWN FOR THE TOWN OF NORTH BEACH'S CONSIDERATION. PLANTING LOCATIONS MAY BE PLACED AT THE DISCRETION OF THE TOWN OF NORTH BEACH

Attachment "B"



PLANTING SCHEDULE				
UNDERSTORY TREES				
SYMBOL	BOTANICAL NAME	COMMON NAME	SIZE	QUANTITY
ANG	<i>Acer negundo</i>	box elder	3/4" CAL, #5 CG	4
DV	<i>Diospyros virginiana</i>	common persimmon	3/4" CAL, #5 CG	4
JV	<i>Juniperus virginiana</i>	eastern redcedar	6' HT., #5 CG	4
LARGE SHRUBS				
SYMBOL	BOTANICAL NAME	COMMON NAME	SIZE	QUANTITY
BH	<i>Baccharis halimifolia</i>	eastern baccharis	3' HT, #5 CG	6
IV	<i>Ilex verticillata</i>	winterberry	3' HT, #5 CG	3
MCA	<i>Morella carolinensis</i>	southern bayberry	3' HT, #5 CG	3
MCE	<i>Morella cerifera</i>	wax myrtle	3' HT, #5 CG	3
VC	<i>Vaccinium corymbosum</i>	highbush blueberry	3' HT, #5 CG	3

MASTER PLANTING SCHEDULE (Sheets 1 & 2)				
CANOPY TREES				
SYMBOL	BOTANICAL NAME	COMMON NAME	SIZE	QUANTITY
PSE	<i>Prunus serotina</i>	black cherry	2" CAL, #20 CG	2
PT	<i>Pinus taeda</i>	loblolly pine	8' HT., #20 CG	6
UNDERSTORY TREES				
SYMBOL	BOTANICAL NAME	COMMON NAME	SIZE	QUANTITY
ANG	<i>Acer negundo</i>	box elder	3/4" CAL, #5 CG	28
DV	<i>Diospyros virginiana</i>	common persimmon	3/4" CAL, #5 CG	34
JV	<i>Juniperus virginiana</i>	eastern redcedar	6' HT., #5 CG	28
LARGE SHRUBS				
SYMBOL	BOTANICAL NAME	COMMON NAME	SIZE	QUANTITY
AMCA	<i>Amelanchier canadensis</i>	shadbowl serviceberry	3' HT, #5 CG	20
BH	<i>Baccharis halimifolia</i>	eastern baccharis	3' HT, #5 CG	16
HV	<i>Hamamelis virginiana</i>	common witchhazel	3' HT, #5 CG	11
IV	<i>Ilex verticillata</i>	winterberry	3' HT, #5 CG	27
MCA	<i>Morella carolinensis</i>	southern bayberry	3' HT, #5 CG	24
MCE	<i>Morella cerifera</i>	wax myrtle	3' HT, #5 CG	22
VC	<i>Vaccinium corymbosum</i>	highbush blueberry	3' HT, #5 CG	12



- LEGEND**
- — 6 BH
 - — 3 MCA
 - — 3 MCE
 - — 3 IV
 - — 3 VC
 - 🌳 — 4 JV
 - 🌳 — 4 DV
 - 🌳 — 4 ANG

LANDSCAPE PROGRAMS DIVISION

MOT
MARYLAND DEPARTMENT OF TRANSPORTATION
STATE HIGHWAY ADMINISTRATION

MD 261 (BAY AVENUE)
TWO LANE RECONSTRUCTION
FROM 9TH STREET TO
THE ANNE ARUNDEL COUNTY LINE
Critical Area Planting #2

SCALE: 1" = 20' ADVERTISED DATE: _____ CONTRACT NO. CALMB04

DESIGNED BY: TPC COUNTY: CALVERT
DRAWN BY: TPC LOGMALE: _____
CHECKED BY: JRP HORIZONTAL SCALE: _____
MDE/PRD: 17-23-0099 VERTICAL SCALE: _____

DRAWING NO. **LD-02** OF **LD-02** SHEET NO. **02** OF **02**

BY: fooley

PLOTTED: Thursday, April 08, 2022 AT 11:33 AM

PROPOSED CRITICAL AREA BUFFER PLANTINGS				
TREE PLANTINGS				
Canopy Tree	Minimum Size Eligible for Credit		Minimum Credit Allowed (SF)	Maximum Percent of Landscape Stock Credit
	2" Caliper		200	Not Applicable
	2			
Total Tree Planting Credit			400	
CLUSTER PLANTINGS				
Vegetation Type	Minimum Size Eligible for Credit		Minimum Credit Allowed (SF)	Maximum Percent of Landscape Stock Credit
Planting Cluster for buffer establishment or mitigation of less than 1/2 acre	1 Canopy Tree 2" Caliper	3 Large Shrubs 3' Height	300	Not Applicable
	2	6		
	2 Understory Trees 3/4" Caliper	3 Large Shrubs 3' Height	350	Not Applicable
	88	132		
Total Cluster Planting Credit			16,000	
TOTAL BUFFER PLANTING CREDIT			16,400	
TOTAL MITIGATION NEEDED			16,324	

Note: 4 required for P reduction

600

15400